

Z5 Type Locking Assembly

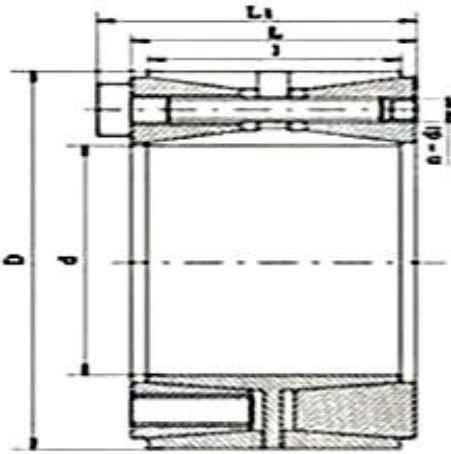
Origin: Shanghai, China

Brand: EDi **Type:** Z5

Materials: 45# (equivalent to C45), 40Cr, and stainless steel

Main applications: Mining machinery, forging machinery, metallurgical machinery, construction machinery, heavy machinery, conveying equipment, CNC machine tools, packaging machinery, printing machinery, food processing machinery, textile machinery, etc.

Specification Table:



Basic dimensions							Rated load		PfN/mm ²	Pf'N/mm ²	MAN·m	kg
Type	d	D	l	L	L1	d1	n	F1KN				
mm												
Z5-100X145	100	145	60	65	77	M12	10	288	14.4	192	145	4.1
Z5-110X155	110	155							15.8	175		4.4
Z5-120X165	120	165							20.8	192		4.8
Z5-130X180	130	180	68	74	86	M12	15	433	28.1	193	145	6.5
Z5-140X190	140	190							36.3	214		7.0
Z5-150X200	150	200							39.0	200		7.4
Z5-160X210	160	210							48.5	219		7.8
Z5-170X225	170	225	75	81	95	M14	18	712	60.6	215	230	10.0
Z5-180X235	180	235							64.1	203		10.6
Z5-190X250	190	250	88	94	108	M14	20	792	75.2	178	230	14.3
Z5-200X260	200	260							95.0	203		15.0
Z5-210X275	210	275	98	104	120	M16	18	970	102.0	187	355	17.5
Z5-220X285	220	285							99.0	183		19.8
Z5-240X305	240	305							1318	222		176
Z5-250X315	250	315										

Z5-260X325	260	325					25	1370	178.0		172		23.0					
Z5-280X355	280	355	120	126	144	M18	24	1590	222.5	188	149	485	35.2					
Z5-300X375	300	375											1650	248.0	183	146	37.4	
Z5-320X405	320	405	135	142	162	M20	25	2140	344.0	192	152	690	51.3					
Z5-340X425	340	425													365.0	181	144	54.1
Z5-360X455	360	455	158	165	187	M22		2670	480.0	176	139	930	75.4					
Z5-380X475	380	475													508.0	166	133	79.0
Z5-400X495	400	495													535.0	158	128	82.8
Z5-420X515	420	515					30	3200	673.0	181	147	86.5						
Z5-450X555	450	555							3700	832.5	175	142	112.0					
Z5-480X585	480	585	172	180	204	M24	32	3950	948.0	168		139	1200	119.0				
Z5-500X605	500	605															988.0	139
Z5-530X640	530	640	190	200	227	M27	30	4320	1145.0	157	130	1600	151.0					